

PART OF THE NE. 1/4, OF SECTION 16, T.6N., R.2W., S.L.B. & M.

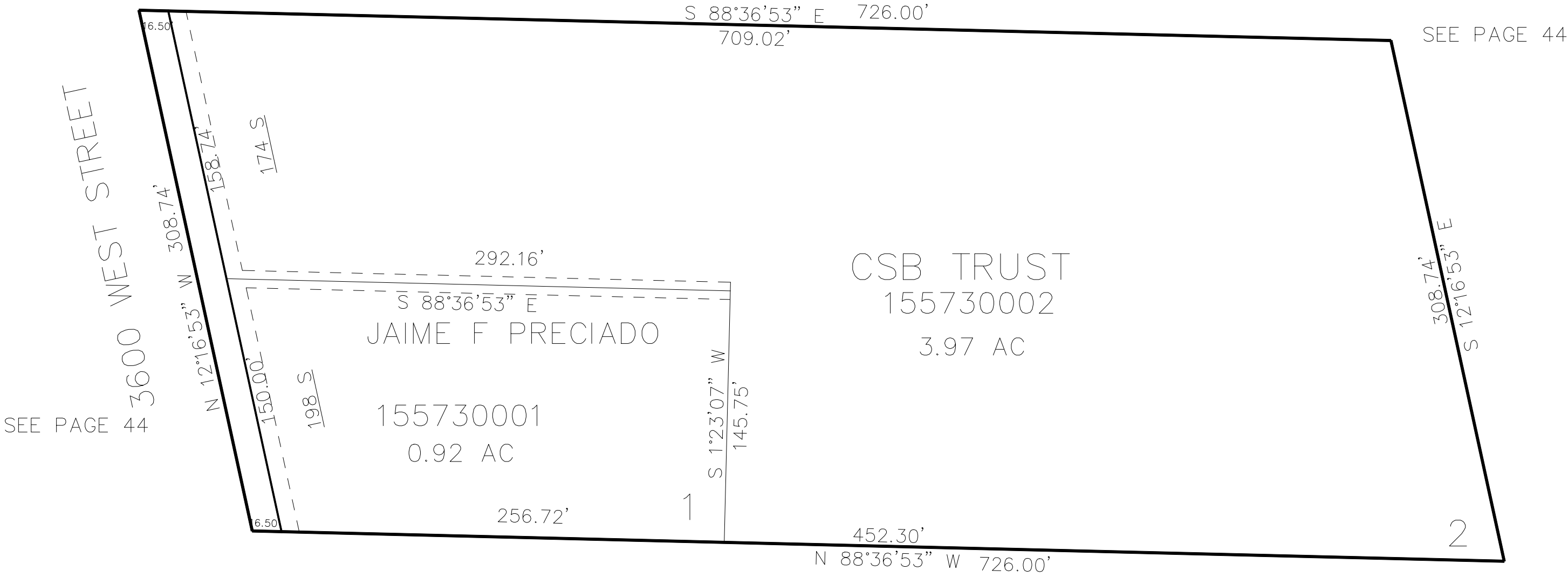
573

SHAYE ESTATES

IN WEBER COUNTY

TAXING UNIT: 516

SCALE 1" = 60'



SEE PAGE 44

SEE PAGE 44

SEE PAGE 44

10' UTILITY & DRAINAGE EASEMENTS EACH
SIDE OF PROPERTY LINES AS INDICATED
BY DASHED LINES EXCEPT AS OTHERWISE
SHOWN.

FOR COMPLETE ENG DATA SEE
ORIGINAL DEDICATION PLAT IN
BOOK 77, PAGE 32 OF RECORDS.